



**Get route alerts!**

@CCNOBakerCounty

## What is Rides to Wellness?



This program is intended to provide transportation to medical care and related wellness appointments.

We bridge the coverage gap between Medicaid/OHP and those who can afford, or have access to, private transportation.

## Who is eligible?

Eligibility is determined before each requested trip

- Must be a resident of Baker County
  - Trip must not be covered by Medicaid or Medicare
- Applicant is prevented from getting transportation by other means
- Purpose of the trip is medical or health-related



**Northeast Oregon  
Public Transportation**

Give us a call to find out how you can ride!

541-523-7433



**Community Connection  
of Northeast Oregon, Inc.**

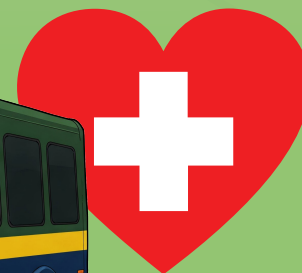
We are a nonprofit agency providing services to the whole Northeast Oregon region. You can donate to one of our programs at



[ccno.org](http://ccno.org), or just give us a call!

**Baker County**

## Rides to Wellness



**Community Connection  
of Northeast Oregon, Inc.**

**Baker County Office**

2810 Cedar St - Baker City, OR

**541-523-7433**

**Call TTY at 711 or 800-735-2900**

**Alternative formats are  
available upon request.**

**NEOtransit.org**

Rev 5/25

# Rides to Wellness

## How to schedule a ride?



**Monday  
thru  
Friday**

**Call between  
8am - 3pm**



### Be prepared to provide...

- Your phone number
- Pick-up and drop-off addresses
- Reason for your appointment
- Time of your appointment
- How long you expect the appointment to last.

**First time, or been a while  
since you've used this  
program?**

We will need additional info to determine your eligibility for the trip you wish to schedule.



If you are Medicaid/Oregon Health Plan (OHP) eligible, please call 1-877-875-4657 instead.

Rides must be called at least the day before the ride, but should be made as soon as the rider knows about the appointment.

### How much does it cost?

All listed copays are one-way, double the amounts for round trips.

0 - 25 mi	\$5
26 - 50 mi	\$10
51 - 80 mi	\$15
81 - 150 mi	\$25

Service is limited to 150 miles

**NEOtransit.org**



**Community Connection  
of Northeast Oregon, Inc.**



**541-523-7433**

**Care  
Attendants  
& Companions**

A spouse of family member may only ride for free if they are a personal care attendant. Anyone going to their own medical care must qualify for their own ride.

We welcome your service animal or personal care attendant, but we ask that you disclose this information when you schedule your ride.

