



Get route alerts!

@CCNOWallowaCounty

What is Rides to Wellness?



This program is intended to provide transportation to medical care and related wellness appointments.

We bridge the coverage gap between Medicaid/OHP and those who can afford, or have access to, private transportation.

Who is eligible?

Eligibility is determined before each requested trip

- Must be a resident of Wallowa County
 - Trip must not be covered by Medicaid or Medicare
- Applicant is prevented from getting transportation by other means
- Purpose of the trip is medical or health-related



**Northeast Oregon
Public Transportation**

Give us a call to find out how you can ride!

541-426-3840



**Community Connection
of Northeast Oregon, Inc.**

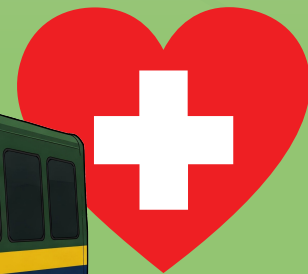
We are a nonprofit agency providing services to the whole Northeast Oregon region. You can donate to one of our programs at



ccno.org, or just give us a call!

Wallowa County

Rides to Wellness



**Community Connection
of Northeast Oregon, Inc.**

Wallowa County Office

702 NW 1st St - Enterprise, OR

541-426-3840

Call TTY at 711 or 800-735-2900

**Alternative formats are
available upon request.**

NEOtransit.org

Rev 5/25

Rides to Wellness

How to schedule a ride?



**Monday
thru
Friday**

**Call between
8am - 3pm**



Be prepared to provide...

- Your phone number
- Pick-up and drop-off addresses
- Reason for your appointment
- Time of your appointment
- How long you expect the appointment to last.

**First time, or been a while
since you've used this
program?**

We will need additional info to determine your eligibility for the trip you wish to schedule.



If you are Medicaid/Oregon Health Plan (OHP) eligible, please call 1-877-875-4657 instead.

Rides must be called at least the day before the ride, but should be made as soon as the rider knows about the appointment.

How much does it cost?

All listed copays are one-way, double the amounts for round trips.

0 - 25 mi	\$5
26 - 50 mi	\$10
51 - 80 mi	\$15
81 - 150 mi	\$25

Service is limited to 150 miles

NEOtransit.org



**Community Connection
of Northeast Oregon, Inc.**



541-426-3840

Care Attendants & Companions

A spouse of family member may only ride for free if they are a personal care attendant. Anyone going to their own medical care must qualify for their own ride.

We welcome your service animal or personal care attendant, but we ask that you disclose this information when you schedule your ride.

